



# 2023 OAR Contrast Enhanced Mammography (CEM)



**Saturday, September 23, 2023**  
**8:00 AM - 2:00 PM**

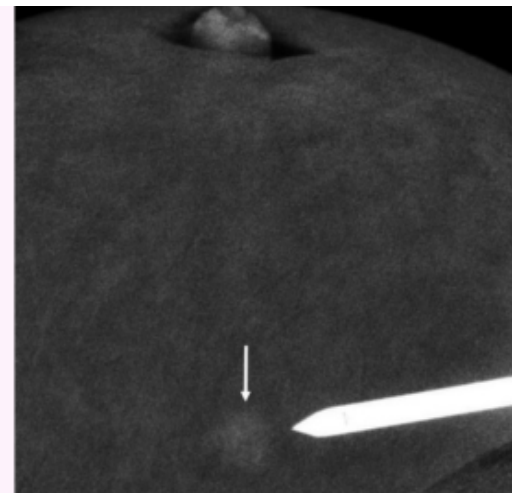
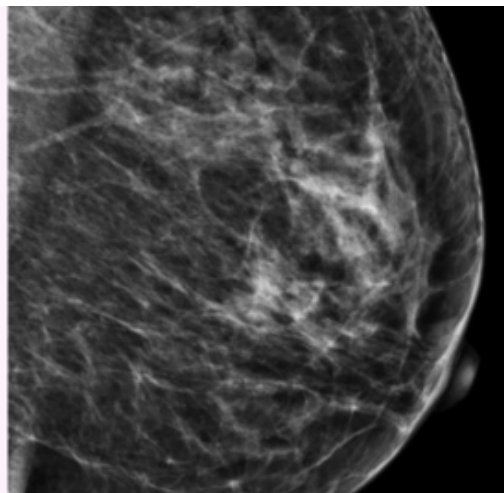
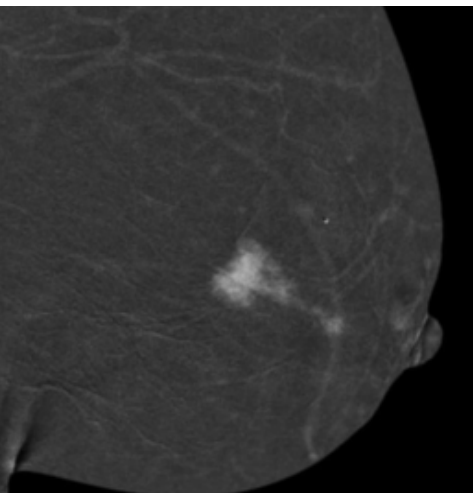


**Webcast Only**

## **RADIOLOGISTS & TECHNOLOGISTS ADVANCE YOUR CAREER TODAY!**

Contrast enhanced mammography (CEM) is an exciting new application of digital mammography that combines the standard mammography images with contrast iodine and provides functional information in addition to morphology information, like breast MRI. This technology is designed to highlight lesions from obscuring breast masses. There is a growing demand for implementing CEM technology at current Women’s Centers as well as understanding how this new technology will impact your current workflow. This program will provide you with the tools you will need to understand the fundamentals, benefits, and the daily utilization of CEM within your facility. A comprehensive look at the current implementation guidelines, interpretations and clinical implications will be discussed.

**The program will offer 8.0 CME credits and is the first to offer certificate in-training in CEM upon successful completion.**



## **COURSE OBJECTIVES**

At the conclusion of this activity, participants should be able to:

1. Understand the concept of CEM and technical aspects
2. Know new CEM BI-RADS Lexicon
3. Learn how to interpretate CEM exams
4. Be familiar with the management options of lesions detected by CEM
5. Be able to evaluate the pathology results of lesions detected by CEM
6. Recognize the clinical implications of CEM
7. Complete 25 self-assessment cases

## **REGISTER HERE**

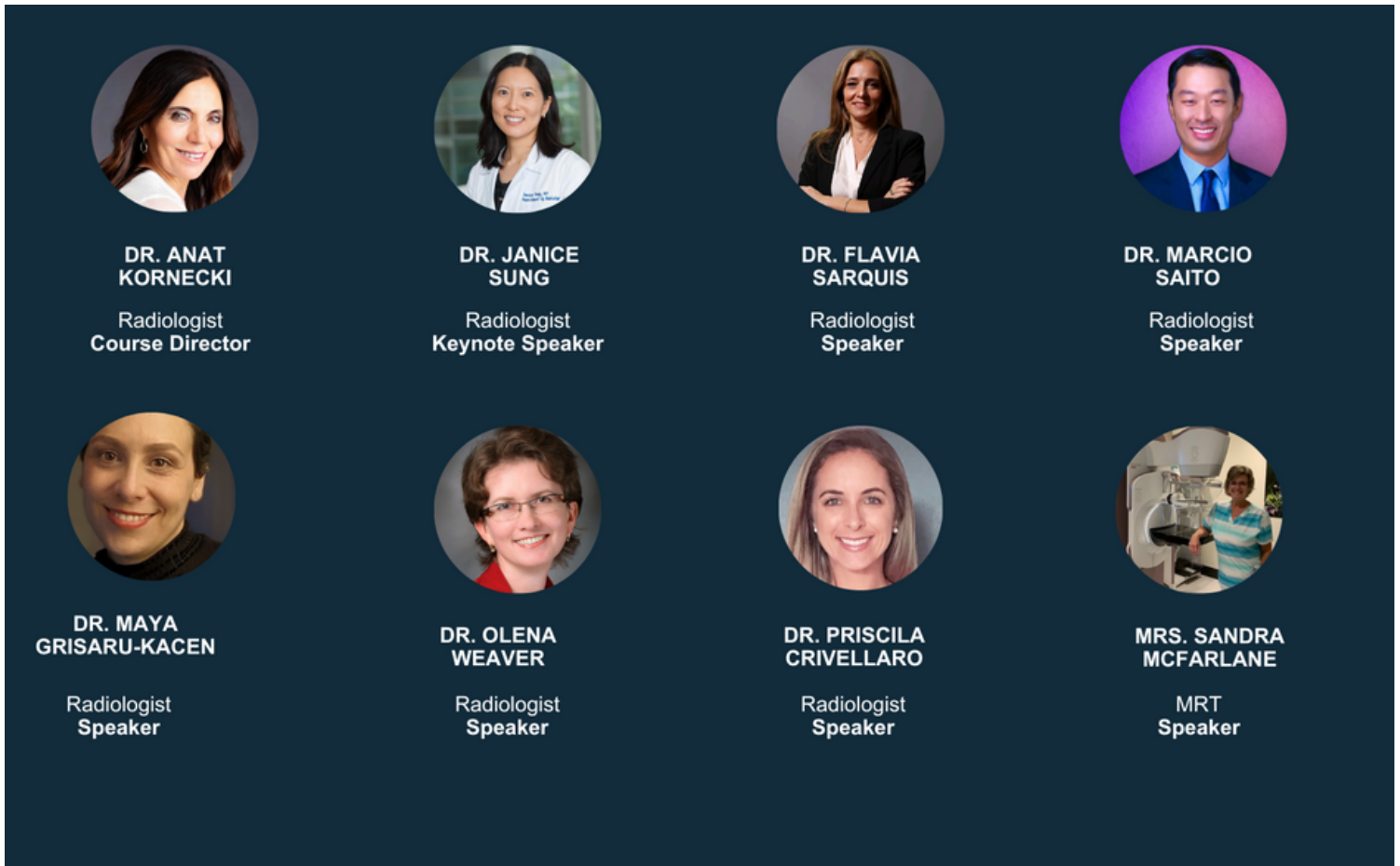
- OAR Member: \$150**
- Non-OAR Member: \$275**
- Radiology Residents/Fellows: Free**
- Other Related Specialties: \$275**
- Technologists: \$125**









**Can't attend live?** Don't worry. This event will be recorded and available on-demand to those who are registered approximately 3-5 business days after the course.

## TARGET AUDIENCE

1. The radiologists who will participate in this course will find it very useful for their clinical practice, whether they already use CEM or not since this course will highlight new aspects and perspectives.
2. Mammography technologists will find his course very helpful in learning how to start a CEM program or to improve an existing one.
3. Ultrasound technologists will find this course very helpful in providing second look exam and finding lesions detected by CEM.
4. MRI technologists will find this course very helpful in the evaluation of findings detected by CEM vs. MRI.

## SPEAKERS



 <p><b>DR. ANAT KORNECKI</b> Radiologist Course Director</p>	 <p><b>DR. JANICE SUNG</b> Radiologist Keynote Speaker</p>	 <p><b>DR. FLAVIA SARQUIS</b> Radiologist Speaker</p>	 <p><b>DR. MARCIO SAITO</b> Radiologist Speaker</p>
 <p><b>DR. MAYA GRISARU-KACÉN</b> Radiologist Speaker</p>	 <p><b>DR. OLENA WEAVER</b> Radiologist Speaker</p>	 <p><b>DR. PRISCILA CRIVELLARO</b> Radiologist Speaker</p>	 <p><b>MRS. SANDRA MCFARLANE</b> MRT Speaker</p>

## EDUCATIONAL GRANT

The OAR wishes to acknowledge the generous support from GE HealthCare Canada who have provided us with an unrestricted educational grant in support of the event. With their support, we are able to provide you with high value, cost-efficient CME programming.



GE HealthCare

*Don't miss out on this unique CME.*

**[Register Now](#)**